

Smart Move

Eastfield Road
Peterborough
Cambridgeshire
PE1 4AX

£3,000 Monthly



- 7 Bedrooms
- Two Bathrooms
- Utility Area
- Large Rear Garden
- On Street Parking
- Available Now



Ref: PRA12527

Viewing Instructions: Strictly By Appointment Only

General Description

Smart move are pleased to offer this 7 Bedroom, Three story property to the market. The property offers lots of living space, two bathroom areas, and a large kitchen on the middle floor. call Smart move today on 01733 313373 to arrange a viewing.

Accommodation

Entrance Hallway

UPVC Door leading to entrance hallway, Stairs leading to basement and first floor, radiator, Electric Cupboard. Emergency lighting. Smoke detectors.

Utility Room (6' 04" x 9' 01") or (1.93m x 2.77m)

Window to rear aspect, Door Leading to rear garden, Boiler

Bedroom 1 (11' 08" x 16' 09") or (3.56m x 5.11m)

UPVC Double glazed bay window to front aspect, radiator, television point, powerpoints

Bedroom 2

UPVC Double glazed window to rear aspect, powerpoints, radiator

Ground Floor

door to entrance hallway, understairs storage cupboard, side door rear access, Shower room with three piece suite, shower cubicle with shower over, WC, Pedestal wash hand basin, fully tiled, window to side aspect, radiator. Emergency lighting. Smoke detectors

Bedroom 3 (11' 04" x 10' 06") or (3.45m x 3.20m)

UPVC Bay window to front aspect, radiator, powerpoints

Bedroom 4 (16' 09" x 11' 06") or (5.11m x 3.51m)

UPVC Double glazed bay window to front aspect, radiator, powerpoints

First Floor Landing

Storage cupboard, power points. Emergency lighting, smoke detectors

Kitchen (11' 10" x 11' 0") or (3.61m x 3.35m)

Base and eye level units with complementary work surfaces over, two single ovens with two four ring gas hobs above and two extractors over, two Stainless steel sink units with mixer taps over, UPVC Double glazed window to rear aspect, Laminated flooring, powerpoints

Shower Room (6' 03" x 9' 0") or (1.91m x 2.74m)

Three Piece Suite comprising of over extended mains fed shower in shower cubicle, WC, pedestal wash hand basin, radiator, tiled

Bedroom 5 (17' 01" x 12' 11") or (5.21m x 3.94m)

Two UPVC Double glazed windows, radiator, powerpoints

Second Floor Landing

UPVC Double glazed window to rear aspect, internal lighting, smoke alarm. Emergency lighting, smoke detectors

Bedroom 6 (10' 10" x 11' 11") or (3.30m x 3.63m)

Two velux windows to rear aspect, powerpoints, radiator

Bedroom 7 (17' 03" x 13' 01") or (5.26m x 3.99m)

UPVC Double glazed window to front aspect, Velux window to front aspect, Feature fireplace, two radiators, powerpoints

Outside

Steps leading up to door, metal railings to front, permit parking, to rear the property is mainly laid to lawn, paved patio seating area.

Services

Mains electricity, mains water, mains drainage, mains gas

Tenure

We are informed that the tenure is

Council Tax

Band D

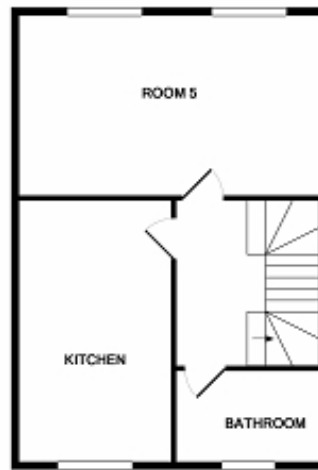




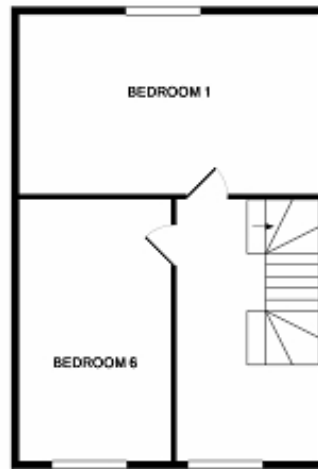
GROUND-FLOOR



1ST FLOOR



2ND FLOOR



3RD FLOOR

We had every attempt has been made to ensure the accuracy of the floor plan contained here, measurements of doors, windows, rooms and any other items are approximate and no responsibility is taken for any error, omission, or mis-statement. This plan is for illustrative purposes only and should be used as such by any prospective purchaser. The services, systems and appliances shown have not been tested and no guarantee as to their operability or efficiency can be given.
Made with Metaplan 02017

All measurements are approximate. The deeds have not been inspected. Please note that we have not tested the services of any of the equipment or appliances in this property. Stamp duty is not payable up to £125,000. From £125,001 to £250,000 - 2% of Purchase Price. From £250,001 to £925,000 - 5% of Purchase Price. From £925,001 to £1,500,000 - 10% of Purchase Price. From £1,500,001 onwards - 12% of Purchase Price. N.B. Stamp Duty is paid by the purchaser and not the vendor. Proceeds Of Crime Act 2002: We are obliged to report any knowledge or suspicion of money laundering to NCIS (National Crime Intelligence Service) and should a report prove necessary we are precluded from conducting any further professional work without consent from NCIS. These particulars are issued in good faith by us from information supplied by the vendor, but the accuracy is not guaranteed, nor will we accept responsibility for any error therein, nor shall the particulars form part of any contract. These particulars are also issued on the understanding that any negotiations in respect of the purchase of this property shall be carried out through us. Your home is at risk if you do not keep up repayments on a mortgage or any other loan secured on it. An insurance contract may be required. Written quotation available upon request. Mortgages secured on property.